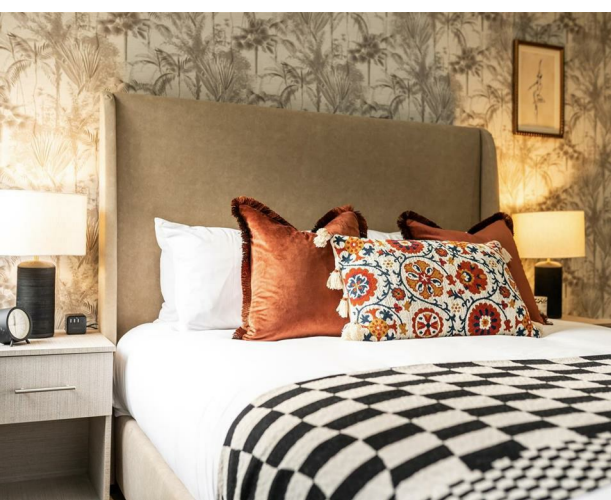
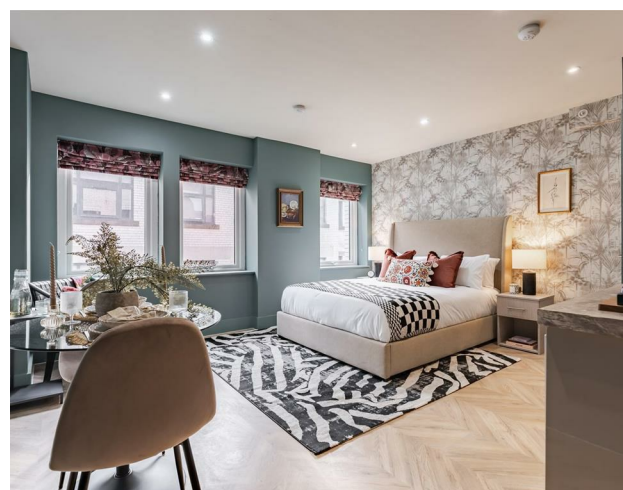


APT 21 - Athenaeum Residence, 147 - 157 The Headrow,  
Leeds, LS1 5EW  
£1,250 Per month

**V&L**  
PROPERTIES





# APT 21 - Athenaeum Residence, 147 - 157 The Headrow, Leeds, LS1 5EW

## £1,250 Per month

### Council Tax Band: C

AH21

Welcome to this charming apartment located at 147A The Headrow, Leeds, LS1 5EW. This stylish residence offers a unique blend of comfort and modern living, making it an ideal choice for those seeking a vibrant urban lifestyle.

As you enter, you will be greeted by a bright and spacious open-plan living area, perfect for both relaxation and entertaining. This inviting space allows for seamless interaction with friends and family, creating a warm atmosphere for gatherings. The modern kitchen is fully equipped with all the essentials, making it easy to whip up culinary delights and enjoy cooking adventures.

The stylish apartment provides a cozy retreat that is both functional and aesthetically pleasing. This space is designed to be your perfect hangout, offering a peaceful escape from the hustle and bustle of city life. The









22 Regent Street  
Leeds  
LS2 7QA  
01133 225737  
info@vgl-properties.co.uk  
vgl-properties.co.uk

